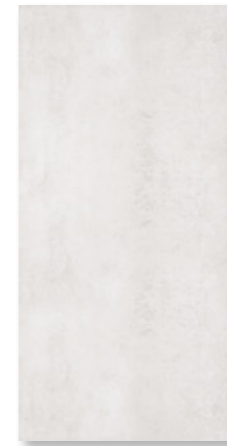




EN 14411 Unglasiertes Feinsteinzeug durchgefärbt · unglazed porcelain gres solid-coloured
Kalibriert und rektifiziert · calibrated and rectified



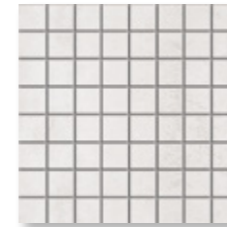
IND 810 U 120
weiß · white



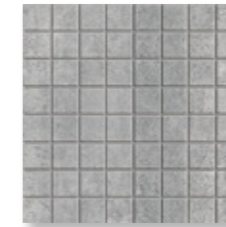
IND 811 U 120
grau · grey



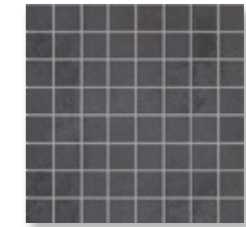
IND 814 U 120
blue



IND 401 D 126
weiß · white
2,9 x 2,9 cm (R10/B)



IND 402 D 126
grau · grey
2,9 x 2,9 cm (R10/B)



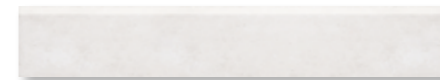
IND 403 D 126
blue
2,9 x 2,9 cm (R10/B)



IND 670 Z 109
weiß · white



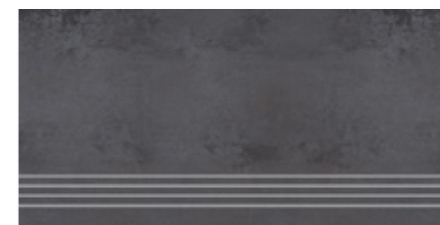
IND 671 Z 109
grau · grey



IND 660 Z 104
weiß · white
8,0 x 50 cm



IND 661 Z 104
grau · grey
8,0 x 50 cm



IND 674 Z 109
blue



IND 664 Z 104
blue
8,0 x 50 cm

Verpackungsdaten Package units	Format format	Stück/m ² pieces/m ²	kg/m ² kg/m ²	m ² /Karton m ² /carton	Stück/Karton pieces/carton	kg/Karton kg/carton	m ² /Palette m ² /pallet	Stück/Palette pieces/pallet	kg/Palette kg/pallet
Bodenfliese · floor tile	25 x 50 cm (248 x 498 x 9,0 mm)	8	19,12	1,50	12	28,76	39,00	312	747,0
Mosaik · mosaic	2,9 x 2,9 cm (248 x 248 x 9,0 mm)	16	19,12	-	10	12,03	-	-	-
Treppenfliese · stair tile	25 x 50 cm (248 x 498 x 9,0 mm)	2*	4,78	-	10	23,98	-	-	-
Sockel · skirting board	8,0 x 50 cm (80 x 498 x 9,0 mm)	2*	1,60	-	15	12,08	-	-	-

Treppenfliese mit gerundeter Vorderkante und gefrästen Rillen · Stair tile with bullnose and non slip grooves
*pro lfd. m · per m