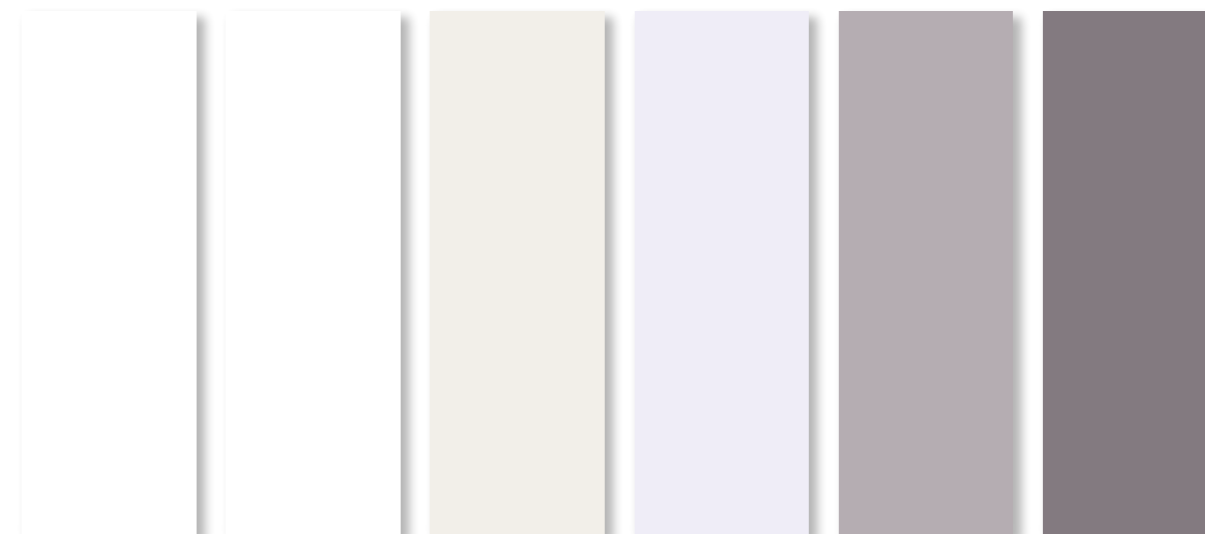




EN 14411 Glasiertes Steingut · glazed wall tile

Holly  
20 x 60 cm



**HOL 27** U 116  
weiß matt · white satin

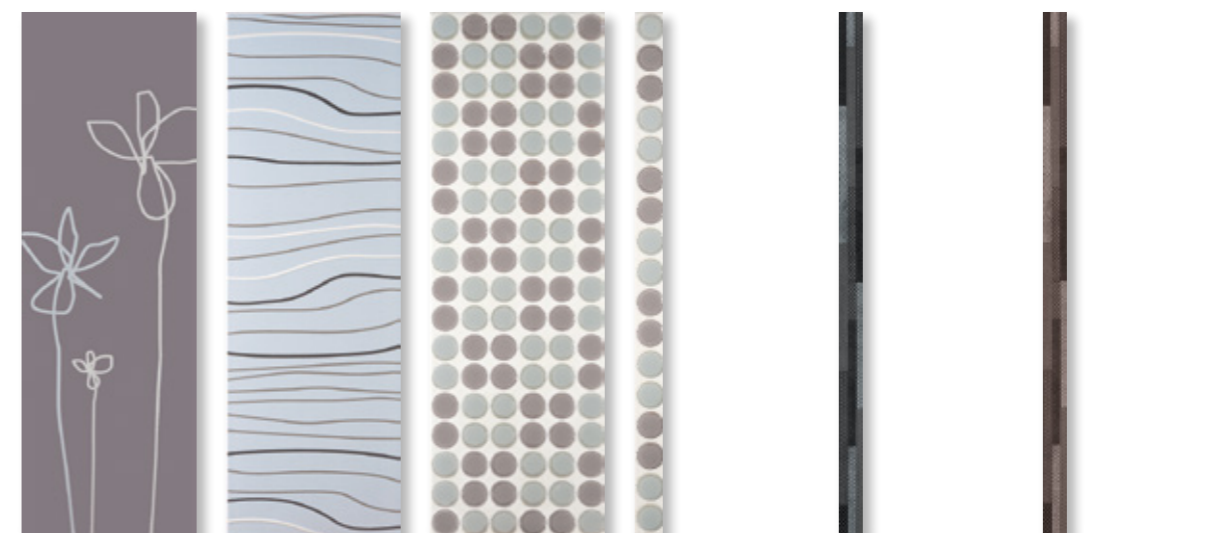
**HOL 20** U 116  
weiß glz. · white glossy

**HOL 22** U 116  
hellbeige glz. · light beige glossy

**HOL 21** U 116  
hellgrau glz. · light grey glossy

**HOL 28** U 118  
grau glz. · grey glossy

**HOL 29** U 118  
dunkelgrau glz. · dark grey glossy



**HOL 2003** D 125  
Fio dunkelgrau · dark grey  
20 x 60 cm

**HOL 2002** D 125  
Linea hellblau · light blue  
20 x 60 cm

**HOL 2001** D 128  
Loopy weiß · white  
20 x 60 cm

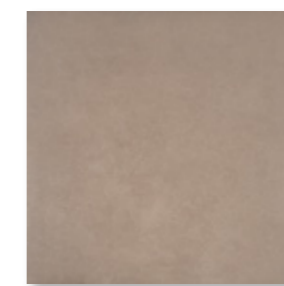
**HOL 2051** D 120  
Loopy weiß · white  
3,2 x 60 cm

**HOL 2052** D 120  
Clubbing schwarz · black  
2,7 x 60 cm

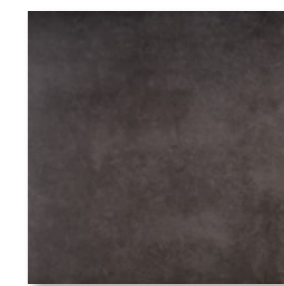
**HOL 2053** D 120  
Clubbing mokka · mocha  
2,7 x 60 cm



**TRU 231** U 124  
grau · grey  
60 x 60 cm



**TRU 237** U 124  
tabak · tobacco  
60 x 60 cm



**TRU 235** U 124  
anthrazit · anthracite  
60 x 60 cm

Bodenfliese  
floor tile

Trust  
Seite · page 135 - 138

Verpackungsdaten Package units	Format format	Stück/m <sup>2</sup> pieces/m <sup>2</sup>	kg/m <sup>2</sup> kg/m <sup>2</sup>	m <sup>2</sup> /Karton m <sup>2</sup> /carton	Stück/Karton pieces/carton	kg/Karton kg/carton	m <sup>2</sup> /Palette m <sup>2</sup> /pallet	Stück/Palette pieces/pallet	kg/Palette kg/pallet
Wandfliese · wall tile	20 x 60 cm (198 x 598 x 10 mm)	8,33	17,41	0,96	8	16,80	46,10	384	807,0
Dekor · decor	20 x 60 cm (198 x 598 x 10 mm)	8,33	17,41	-	6	12,62	-	-	-
Bordüre · border	3,2 x 60 cm (32 x 598 x 10 mm)	1,66*	0,63	-	20	7,58	-	-	-
Bordüre · border	2,7 x 60 cm (27 x 598 x 10 mm)	1,66*	0,52	-	22	7,01	-	-	-

\*pro lfd. m · per m