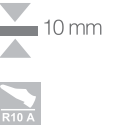


SIDE/SPOT wall 32,5x65

Weißscherbige Wandfliesen  10 mm
RIVESTIMENTO IN PASTA BIANCA
WHITE BODY WALL TILE
REVÊTEMENT EN PÂTE BLANCHE

FOREST floor/decors 30x60

Eingefärbtes Feinsteinzeug  10 mm
GRES PORCELLANATO AD IMPASTO COLORATO
COLOURED BODY PORCELAIN STONEWARE
GRES CERAM COLORE PLEINE MASSE



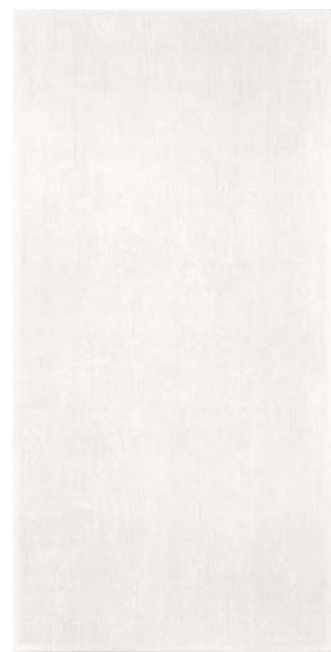
Side Bianco 32,5x65

55



Side Pergamon 32,5x65

55



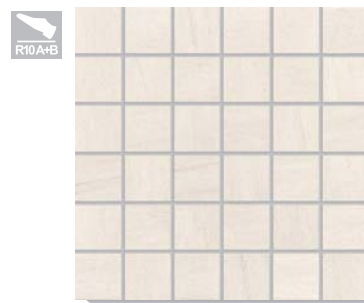
Spot Bianco 32,5x65

55



Spot Pergamon 32,5x65

55



Mosaico Forest Cream 30x30

37



Mosaico Forest Grey 30x30

37



Mosaico Forest Dark Grey 30x30

37



Mosaico Forest Black 30x30

37



Forest Cream NATURALE 30x60

55



Forest Grey NATURALE 30x60

55



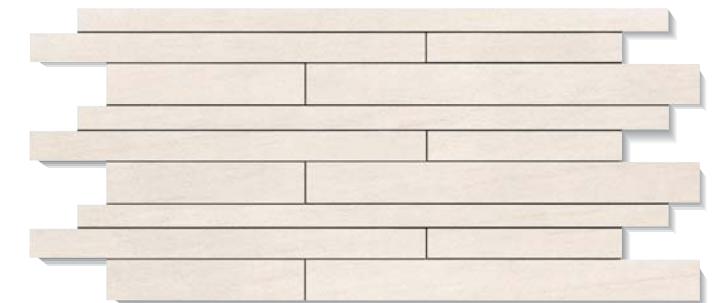
Forest Dark Grey NATURALE 30x60

55



Forest Black NATURALE 30x60

55



Forest Fascia Cream NATURALE 30x60

46



Forest Fascia Grey NATURALE 30x60

46



Forest Fascia Dark Grey NATURALE 30x60

46



Forest Fascia Black NATURALE 30x60

46

VERPACKUNG UND GEWICHT - IMBALLAGGI E PESI - PACKING AND WEIGHTS - EMBALLAGES ET POIDS									
Formate Formats Sizes Formats	Oberfläche Superfici Surfaces	St./Karton Pz./Scatola Pcs./Box	Qm./Karton Mq./Scatola Sq.m./Box	Qm./Palette Mq./Palet Sq.m./Pallet	Karton/Palette Scatole/Pallet Boxes/Pallet	Gewicht/Karton Peso/Scatola Weight/Box	Gewicht/QM Peso/Mq Weight/Mq	Gewicht/Palette Peso/Pallet Weight/Pallet	Dimensione Palette Dimensione Pallet Size Pallet Masse Palette
32,5x65	Side	6	1,27	40,64	32	22,30 Kg	17,56 Kg	714 Kg	cm 80x120x80 (H)
32,5x65	Spot	6	1,27	40,64	32	22,30 Kg	17,56 Kg	714 Kg	cm 80x120x80 (H)
30x60	Forest	6	1,08	51,84	48	23,54 Kg	21,79 Kg	1130 Kg	cm 80x120x75 (H)
30x60	Fascia Forest	5	-	-	-	-	-	-	-
30x30	Mosaico Forest	11	-	-	-	-	-	-	-
7x60	Battiscopa Forest	12	-	-	-	-	-	-	-
30x60	Gradone Forest	2	-	-	-	-	-	-	-

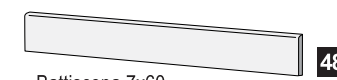


Wir empfehlen für (30x60) eine Verlegung im 1/3 Verband sowie mit der gleichen Farbe der Grundplatte auszufügen um einen optimalen Effekt zu erreichen.

Posa consigliata (30x60) con una sfalsatura tra ciascuna piastrella non superiore a 15 cm circa. Per un effetto ottimale è consigliato utilizzare una stuccatura dello stesso colore della piastrella posata.

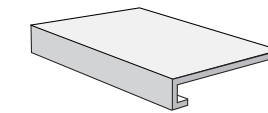
When laying (30x60) you are recommended not to stagger the tile by more than about 15cm-6". To obtain maximum aesthetic value, we suggest grout color to be same of the tile installed.

Pose conseillée (30x60) avec un décalage entre chaque carreau non supérieur à environ 15 cm. Pour obtenir le meilleur résultat esthétique on conseil de poser le produit utilisant un mastic de la même couleur du carreau posé.



• Battiscopa 7x60

48



• Gradone 30x60

22

FORMSTÜCKE SIND IN ALLEN
FARBEN ERHÄLTICH
• Disponibile in tutti i colori
• Available on all colours
• Disponible sur toute la serie

TREPPENECKSTUFEN NUR
AUF ANFRAGE ERHÄLTICH
• Angolare disponibile su richiesta
• Corner piece available upon request
• Angolo gradone a costa retta sur commande

ARPA
CERAMICHE
www.arpaceramiche.it